

INDOFINE Chemical Company, Inc.

121 Stryker Lane, Bldg. 30, Suite 1 • Hillsborough, NJ 08844 • U.S.A.

Phone: (908) 359-6778 • FAX: (908) 359-1179

website: www.indofinechemical.com

e-mail: chemical@indofinechemical.com

CERTIFICATE OF ANALYSIS

Catalog Number: 06-1210

Product Name: **SOLASONINE**
(Solasodamine)

CAS Number: [19121-58-5]

Lot Number: 1905242

Chemical Formula: C₄₅H₇₃NO₁₆

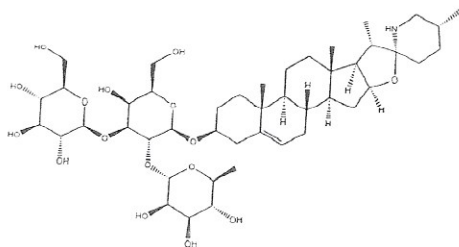
Molecular Weight: 884.07

Appearance: Off-white powder

Water Content: 2.9%

Storage: Store at 2-8°C. Protect from light.

Purity(HPLC): 99.65%



Prepared by:
Ramesh Mandadi
Ramesh Mandadi
Director of Operations

Reviewed and approved by:
Sujata Moton
S. Moton
VP



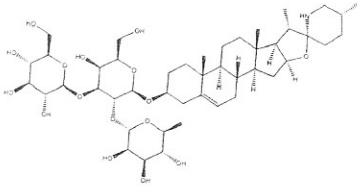
INDOFINE Chemical Company, Inc.

121 Stryker Lane, Bldg. 30

Hillsborough, NJ 08844 USA

Phone: (908) 359-6778; Fax: (908) 359-1179

HPLC ANALYSIS

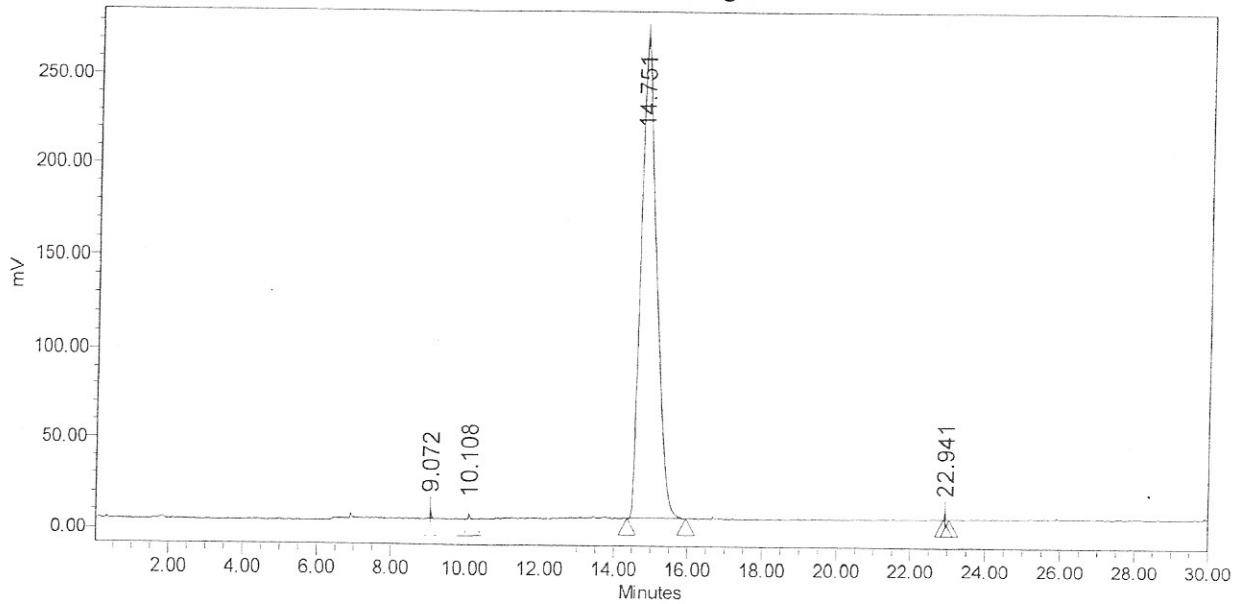


Catalog No.: 06-1210
Product Name: Solasonine
Lot No.: 1905242

SAMPLE INFORMATION

Sample Name:	Solasonine	Acquired By:	System
Sample Type:	Unknown	Sample Set Name:	
Vial:	1	Acq. Method Set:	Solasonine
Injection #:	1	Processing Method:	Samples
Injection Volume:	10.00 ul	Channel Name:	SATIN
Run Time:	30.0 Minutes	Proc. Chnl. Descr.:	

Auto-Scaled Chromatogram



Peak Results

Name	RT	Area	% Area	USP Plate Count	USP Resolution
1	9.072	11601	0.15	344377.90	
2	10.108	7374	0.10	374804.62	16.21
3	14.751	7648143	99.65	4975.11	9.98
4	22.941	8111	0.11	2261072.30	17.69

Prepared by:
Ramesh Mandadi
Ramesh Mandadi
Director of Operations

Reviewed and Approved by:
Sujata Moton
Sujata Moton
VP